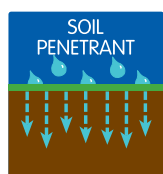
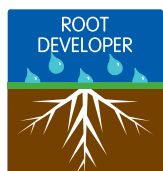


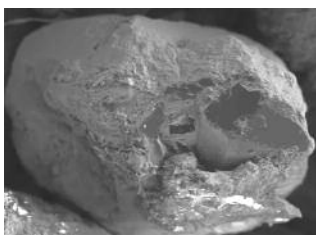
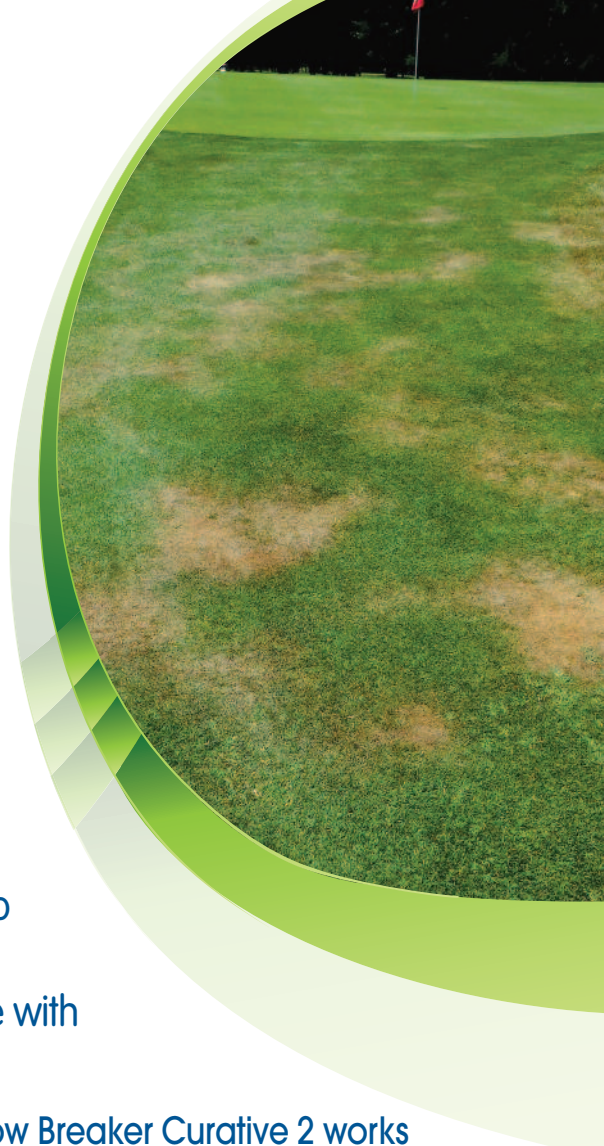
# BREAKER CURATIVE 2



**Wetting agent** – cures water repellency and reinstates water receptivity, acting directly on the cause of Dry Patch

## WHY BREAKER CURATIVE 2

- ▶ A unique blend of organic components that break down the hydrophobic materials which bind to sand particles in the soil profile
- ▶ Long lasting, effective treatment
- ▶ Extremely safe to all types of turf, with no adverse effects on soil microbial activity
- ▶ Ideally used as a combined programme with Breaker Dynamic Liquid



Electron micrograph of sand grain with waxy coating formed by soil inhabiting fungi of the type that cause Fairy Rings



Electron micrograph of sand grain having been treated with Breaker Curative 2

## How Breaker Curative 2 works

It is the unique **Tenside Hydrophobe Chemistry** in **Breaker Curative 2** that targets the water repellent materials which bind to the sand particles that make the rootzone unable to re-wet. The mild cleansing action removes the waxy materials and places them in solution, which means they can be flushed from the rootzone profile. As **Breaker Curative 2** keeps the materials in a true solution, they cannot re-attach themselves to the sand particles.

## Combined Breaker Curative 2 and Breaker Dynamic applications

**Breaker Curative 2** will cure soil water repellency but will not help water penetrate through and maintain even moisture distribution in the rootzone. **Breaker Curative 2** is best applied as part of a combined application programme with **Breaker Dynamic** liquid or other high quality wetting agents.

If water droplets do not penetrate into air-dried soil cores within one minute then the soil may be considered to be water repellent. This technique is extremely useful in assessing whether a wetting agent or other material has had an effect on soil water repellency.

Trials on 100% sand rootzones and USGA rootzone constructions have shown the reduction in soil water repellency that can be achieved using a **Breaker Curative 2/Breaker Dynamic** liquid programme. (See website for details).



### Product Detail

Contains: Aqueous hydrophobic polymers

Pack size: 10 litres  
200 litres

Pack coverage: 5,000 sq.m (10 litres)  
10 ha (200 litres)

RT order code: 0423859/010 (10 litres)  
0423859/200 (200 litres)

APPLICATION RATES			
Area of use	Breaker Curative 2	Water Volume	Area
Golf greens, golf tees	1 litres	50 litres	500m <sup>2</sup>
Bowling greens, cricket squares	3 litres	150 litres	1,500m <sup>2</sup>
Golf fairways, sportsfields	20 litres	1,000 litres	1 ha

**RECOMMENDED PERIOD OF USE**

Jan Feb Mar Apr May Jun Jul Aug Sep Oct Nov Dec

Use plant protection products safely. Always read the label and product information before use