

Breaker* Advance

A range of Complete Immersion Technology wetting agents for the treatment of Dry Patch and other water-related problems in turfgrass



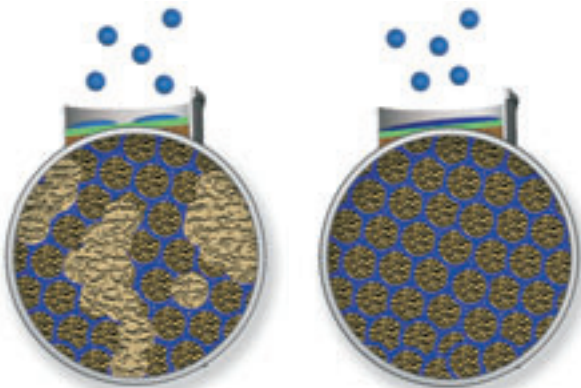
Contains polyoxyalkylene glycol surfactants and soil penetrant

Breaker Advance Liquid

Dry Patch is known to be caused by soil inhabiting fungi of the type that cause Fairy Rings. As their mycelium grows through the soil they deposit a coating of waxes and lipids, particularly around sand particles.

Complete Immersion Technology

When standard wetting agents are applied to turf, they infiltrate the ground through the force of gravity. Inevitably this solution will follow the path of least resistance, and although some spreading may occur, complete wetting of the soil profile is not achieved. As a result, dry spots are left within the rootzone that will continue to be water repellent. Not the case with Breaker Advance.



Standard Wetter
Partial Immersion: Many soil particles remain untreated

Breaker Advance
Complete Immersion: Every soil particle becomes treated

Breaker Advance brings a more uniform and consistent balance of air:moisture in the soil profile. Consequently, this reduces drought stress to the turf plant resulting in its metabolic processes being able to respond more effectively so optimising growth.

Breaker Advance contains three advanced active components to prevent and cure Dry Patch:

This powerful combination ensures a strong attraction between the applied product and the water-repellent particles. The unique spreading action moves the wetting agent both downwards and sideways, effectively treating the whole of the soil profile. What starts as a totally water-repellent soil is converted to a water-receptive soil, with all the inherent benefits of consistency and long-lasting effects.

The wetting and spreading agent

This reduces the surface tension of water droplets so enabling them to spread more readily across the soil surface, improving waterflow coverage through the previously water repellent surface. This component also increases the speed at which excess surface water moves down into the rootzone.

The soil penetrant

The penetrating system enables Breaker Advance to move through the

Prevents and cures Dry Patch

Triple active components – wetting and spreading agent; soil penetrant; re-wetting agent

Penetrant System enables product to reach even deeper than previously into the soil profile

Promotes a dry surface as it maintains turf moisture but without wetness

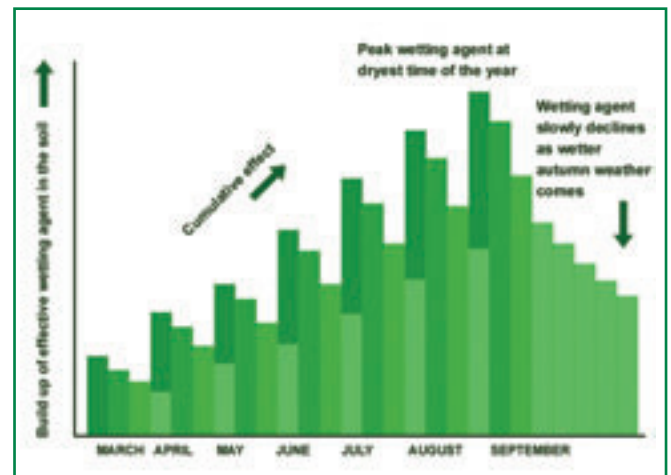
Beneficial effects can usually be seen after 48 hours when applied with irrigation

Safe to grass sward and beneficial micro-organisms

Optional watering-in and low application water volumes

Unique tank mixing compatibilities

Cumulative benefits of programmed application



hydrophobic layer and deep into the root zone, rather than just at the surface and thatch layer, ensuring uniform wetting throughout the rootzone profile. Penetration to the rootzone target takes just a matter of minutes.

A dry soil will be totally re-wetted in 4-6 hours, so visible effects can be seen in 48 hours when applied with irrigation, with the benefits from an application lasting longer.

The re-wetting agent

The hydrophobic (water-repellent) end of the re-wetting agent molecule attaches itself to the waxes and lipids covering the soil and sand particles. The other end of the molecule is hydrophilic (water-loving) which attracts the water molecules, allowing the soil to re-wet. The extended chain is very stable and so provides a long lasting effect.

How to use Breaker Advance Liquid

1. Programme Application

Make the first two applications in early spring (mid-March) at 7-10 day intervals before appearance of Dry Patch symptoms. Repeat as necessary during spring to autumn period. Typical applications are made at monthly intervals. Watering-in is optional as required.

Severely affected areas maybe spot treated as necessary. If treating severely affected areas, application should be carried out in conjunction with aeration to aid penetration.

Rate of Application

Area of use	Breaker Advance	Water Volume	Area
Golf greens, golf tees	1 litre	35-45 litres	500m ²
Bowling greens	3 litres	105-135 litres	1,500m ²
Golf fairways, sportsfields	20 litres	700-900 litres	1 ha

Recommended Nozzles e.g. Hypro, Hardi (guide only)

Equipment	Spray Quality	Hypro (formerly Lurmark) Nozzle		
		Type	Colour	Code
Power Sprayer	Coarse	Flat fan	White	F110-08
Knapsack (Boom)	Coarse	Flat fan	Brown	F80-05

Equipment	Spray Quality	Hardi Nozzle		
		Type	Colour	Code
Power Sprayer	Coarse	Flat fan	White	FF 08 110

Walkover Sprayers

Apply product at half strength and cover area twice.

Groundsman Quantity per 25 litre fill to treat 525m ² (476l/ha)	Professional Quantity per 25 litre fill to treat 668m ² (374l/ha)
525mls x 2 fills	668mls x 2 fills

2. Single Season Application

Apply a single application in early spring (mid-March) before Dry Patch problems appear. This must be watered-in.

Rate of Application

Area of use	Breaker Advance	Water Volume	Area
Golf greens, golf tees	2.5 litre*	225 litres	500m ²
Bowling greens	7.5 litres*	675 litres	1,500m ²
Golf fairways, sportsfields	50 litres*	4,500 litres	1 ha

*The area must be irrigated for 5-10 minutes after application, ensuring two full passes of the irrigation cycle.

Recommended Nozzles (guide only)

Vehicle Mounted Sprayer (Hypro)

Colour	Code
Light green	F110-05

Vehicle Mounted Sprayer (Hardi)

Colour	Code
Light blue	110-10

Compatibility Recommendations

Mascot Breaker Advance is compatible for tank mixing with the following products in the Mascot Specialities range: Activate-XL, Activate R-ERD liquid, Amino-Form F, Amino-Form R, Cal-Form, K-Form and Mag-Form.

Do not mix more than two products together in any one application. When tank mixing always follow the highest water rates indicated on the labels of the products concerned. Read product label before use.

Pack details of Breaker Advance Liquid

10 litre pack treats 5,000m² (Programme) (0423891/10)

10 litre pack treats 2,000m² (Single)

Also available in 120 and 200 litre drums

*Breaker and Breaker Advance are trade marks of Rigby Taylor Ltd.

Breaker Advance Granules

Dry Patch is known to be caused by soil inhabiting fungi of the type that cause Fairy Rings. As their mycelium grows through the soil they deposit a coating of waxes and lipids, particularly around sand particles.

How to use Breaker Advance Granules

Make 2 applications at 7-10 day intervals in spring (mid-March) before the appearance of Dry Patch symptoms. Repeat as necessary or at monthly intervals throughout the growing season. Watering-in is optional as required.

Rate of Application

Area of use	Breaker Advance Granules	Area
Golf greens, golf tees	10kg	500m ²
Bowling greens	30kg	1,500m ²
Golf fairways, sportsfields	100kg	5,000m ²
Large areas	200kg	10,000m ²

Apply using conventional fertilizer spreading equipment.

Pack details of Breaker Advance Granules

Pack size: 20kg (0423894/)

Pack coverage: 1,000m²

Breaker Advance Tablets

How to use Breaker Advance Tablets

Apply during the spring to autumn period as appropriate. Take one tablet and place in the chamber of the Breaker Advance Applicator Gun. Screw chamber into position and turn on water supply. The tablet will dissolve at a pressure of 60-90 psi.

Spot Treatment

One Breaker Advance Tablet will spot treat 6-7 average sized golf greens (applied at approximately 10 minutes per green).

Overall Treatment

Use one Breaker Advance Tablet per golf green.

Pack details of Breaker Advance Tablets

Pack size: 250g tablet (0423893/) treats variable area sizes.

Breaker Advance Applicator Gun

Dry Patch often occurs as small isolated patches that are best spot treated rather than by blanket applications.

The Breaker Advance Applicator Gun is designed for use with the Breaker Advance Tablet to make spot treatment as simple and effective.

It is fitted with a rose-type head to give an excellent spray pattern and can be used over a wide range of water pressures, usually between 60-90 psi.



Breaker Fairway

Fairway products contain the new Breaker Advance formulation but specially modified to make them ideal for use on fairways and outfield areas. All are applied at 40 l/ha in 400 litres of water, and are available in 200 litre containers (up to 5 ha coverage).



Number 1 The standard formulation for economical application to large amenity areas.

Number 2 Also includes 2% Fe (chelated) + 2% seaweed.

Number 3 Also includes 2% Fe (chelated) + 2% seaweed + 2% amino-acids + 2% carbohydrates.