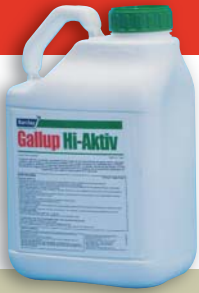


RT

GLYPHOSATE HERBICIDE



Mascot Hi-Aktiv Amenity

- * New generation surfactant system improves plant uptake to give excellent weed control
- * Ready to use advanced formulation giving 36% more herbicidal activity per litre – no general purpose surfactants required
- * Visible symptoms in under 1 week of application
- * Can plant or cultivate from 24 hours for annual weeds and 5 days for perennial weeds

Application rates – Non-crop areas

Target	Mascot Hi-Aktiv Amenity	*Knapsack dilution
Annual grass weeds	1.1 litres/ha	5.5 ml/litre
Annual broad-leaved weeds	1.5 litres/ha	7.5 ml/litre
Perennial grass weeds	2.9 litres/ha	14.5 ml/litre
Perennial broad-leaved weeds	3.7 litres/ha	18.5 ml/litre
Heavily weeded areas	4.4 litres/ha	22.0 ml/litre

*Knapsack calibrated to deliver 100-250 litres/hectare. Read product label before use.

Application rates – Forestry

Target Weed	Mascot H-A Amenity	Water volume	Area
Before planting: Most broad-leaved weeds and grass weeds	3.7 litres	80-250 litres	1 ha
After planting: Most annual/prerennial grasses and broad-leaved weeds	2.9 litres	80-250 litres	1 ha
Broad-leaved woody weeds: Ash, beech, bracken, bramble, brush, hazel, oak, sycamore, willow	2.2 litres	80-250 litres	1 ha
Heather (peat soils)	2.9 litres	80-250 litres	1 ha
Heather (mineral soils)	4.4 litres	80-250 litres	1 ha
Rhododendron	7.3 litres	80-250 litres	1 ha
Cut stump: Deciduous species: 75ml (7.5% solution) in 1 litre water Coniferous species: 150ml (15% solution) in 1 litre water			
Thinning: All species:	1.5ml undiluted product per cut.		Trees more than 10cm diameter make 2-3 cuts.

Application rates –Aquatic

Target weeds	Mascot H-A Amenity	Water volume	Area
Waterside weeds	As non-crop rates	As non-crop rates	As non-crop rates
Emergent weeds	3.7 litres	250 litres	1 ha
Floating weeds	6 litres	100-200 litres	1 ha

Mascot Hi-Aktiv Amenity from Barclay is the first non-irritant, high concentration glyphosate in Europe with full surfactant loading. This new surfactant technology combines new standards of performance whilst being more environmentally friendly than other more traditional formulations.

The product controls weeds by acting on the enzymatic system that is unique to plants and not found in humans or pets, so is very specific, and biodegrades in the soil into natural substances.

HOW TO USE HI-AKTIV AMENITY

Non Cropped Areas

It can be used in a variety of situations including around buildings, industrial sites, on pavements, public paths and roadway verges, for site preparation. Can also be applied at low water volumes.

Timing

Mascot Hi-Aktiv Amenity can be used most times of the year when the plant has sufficient leaf growth and is actively growing.

For annuals, planting or cultivating can be carried out from 24 hours after application. For perennial weeds, planting or cultivating can be carried out from 5 days after application.

Weeds germinating after spraying will not be controlled. The product does not give acceptable control of *Equisetum arvense* (Field Horsetail).

Forestry

Mascot Hi-Aktiv Amenity can be used in land preparation for planting, for cleaning-up around trees, for cut stump application and when thinning by stem injection.

Timing

1. Land preparation

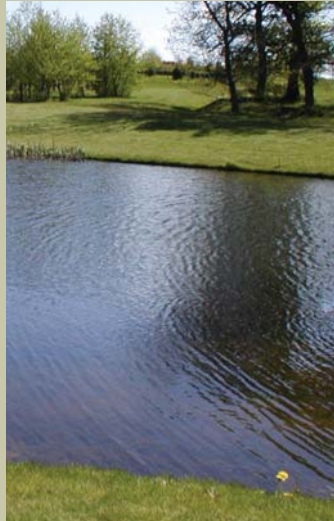
If the ground has been disturbed by forestry operations, first allow the weeds to recover. Apply when there is sufficient leaf cover and the weeds are actively growing.

Allow at least 7 days after application before cultivation or before planting trees.

2. Clean-up after planting

Use a weed wiper or apply by knapsack sprayer around fully guarded trees. It is essential to use a tree guard when applying the product during the growing season.





Bracken: apply after frond tips are unfurled but before pre-senescence.

Heather: apply in late August-early September.

Woody weeds: apply in June-August before leaf senescence but after new growth of the crop has hardened.

Important: The time of hardening of leader growth in any year will vary with species, location and weather amongst many other factors. Hardening may occur from the end of July up to October or even later. Always direct the spray away from leaders to avoid damage to Lammas growth.

3. Cut Stumps

Apply during November-March immediately after felling, or simultaneously whilst sawing with a special attachment to the saw. Do not apply during the period of rising sap flow, normally during the months of March and May.

4. Thinning

Cut into live cambial tissue with a downward axe stroke, ensuring cuts are no more than 1 metre from the ground.

Inject **Hi-Aktiv Amenity** into each cut.

Treat at any time of the year except during the period of rising sap flow, usually March-May.

For ease of identification of treated trees, use a suitable water soluble violet dye added to the prepared solution at a rate of 1ml/10 litres.

Application - Forestry

Apply spray solution as a medium or coarse spray quality (BCPC definition) at nozzle pressures not exceeding 2.5 bar (35psi). Always take care to avoid drift.

Do not spray in windy weather or near to desirable species or amenity plants. Avoid walking in areas where spray is still wet.

Standard Volume Nozzle Choice (Guide Only)

Water volume 80-250 litres/ha

Knapsack	E.g. Hypro 30DT2.0 or 30DT4.0; Cooper Pegler Floodjet, red, blue, green or yellow. Flat fan nozzles must be evenfan, (FE) and low pressure eg Spraying Systems Co. DG Teejet® Even spray tip, DG95015EVS
Boom Sprayer	Hypro F110-04 - F110-08, Teejet® 11004-11008, DG11004, DG11005, Sprays International 110-SF-04

Aquatic Weed Control

Hi-Aktiv Amenity can be used to control a variety of aquatic weed species:

1. Waterside weeds – apply as for non-cropped areas.
2. Emergent weeds including Reeds, Rushes, Sedges, Grasses and Watercress – for most species treat actively growing plants during August-September. Best results against Watercress are achieved when spraying in June. Treat Bulrush in late July.
3. Floating weeds (White water-lily and Yellow water-lily) – treat actively growing plants in July-August.

Contains: 490g/l (660g/l IPA) glyphosate

MAPP No: 12898

Pack size: 5 litres

Pack coverage: Non-cropped land: 1.14 -4.55 ha
Forestry: 0.68-2.27 ha
Aquatic: 1.14-1.35 ha

RT order code: 0488270/05

Use plant protection products safely. Always read the label and product information before use.