



# Rayzor



- \* A dicarboximide fungicide for control of Fusarium Patch and Red Thread
- \* Displays both preventative and curative activity
- \* Ideal for use when grass growth is at its slowest
- \* Formulation is rainfast in 1 hour
- \* Dew build-up is reduced following application
- \* Ideal as part of an integrated disease management programme

### Application rates

Equipment	Rayzor	Water Volume	Area
Vehicle Mounted Hydraulic Sprayer	20 litres	500 litres	1 ha
Knapsack Sprayer	200ml	5 litres	100m <sup>2</sup>

### Recommended nozzles e.g. BFS, Hypro, Hardi (guide only)

Equipment	Spray quality	BFS Nozzle		
		Type	Colour	Code
Power Sprayer	Medium/Coarse Coarse	*WR Flat fan	White	WRFF 08
		Air bubble jet	White	ABJ 08
Knapsack (single jet)	Coarse Coarse	*WR Flat fan	Red	WRFF 04
		Air bubble jet	White	ABJ 08

See detailed Air Bubble Jet application chart page 50

\* WR=Wide Range – These 110° nozzles allow spraying pressures down to 1 bar

Equipment	Spray quality	Hypro Nozzle		
		Type	Colour	Code
Power Sprayer	Coarse	Flat fan	White	F110-08
Knapsack (single jet)	Medium/Coarse	Flood jet	White	DT 4.0

Equipment	Spray quality	Hardi Nozzle		
		Type	Colour	Code
Power Sprayer	Medium/Coarse	Flat fan	Red	AN 2.4
Knapsack (single jet)	Coarse	Flat fan	White	FF08-110

Contains: 255g/l (25% w/w) iprodione

Pack size: 5 litres

Pack coverage: 2,500 sq.m

RT order code: 0632360/05

Use plant protection products safely. Always read the label and product information before use.

### HOW MASCOT RAYZOR WORKS

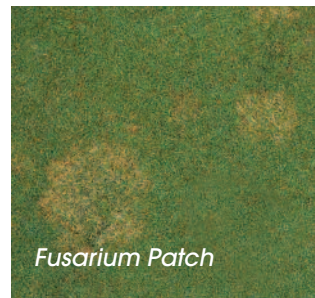
In an integrated disease management regime all aspects need to be considered to achieve the aims required, including:

- Use of general cultural techniques e.g. aeration
- Correct choice of turf maintenance products e.g. biostimulants
- Appropriate use and application of chemical fungicides

When using fungicides it is good product stewardship to rotate their use, using alternative products that have a differing mode of action to ensure the most effective control is achieved.

Fungicides can be generally classified into specific groups, each having different modes of action. Some are multi-site, some are single-site inhibitors with varying effects on the metabolic process of the pathogen.

Contact fungicides such as **Mascot Rayzor** can be applied throughout the year, though best results are achieved in the autumn-spring period when growth is at its slowest. Mowing after application however, will tend to remove the active ingredient and new growth will not be protected.



Fusarium Patch



Red Thread

### HOW TO USE MASCOT RAYZOR

**Mascot Rayzor** specifically controls Fusarium Patch (*Microdochium nivale*) and Red Thread (*Laetisaria fuciformis*). It can be applied only to golf greens, golf tees, and for patch treatment of up to 5% of fairways.

**Mascot Rayzor** can be used all year round to golf courses but ideally should be applied between autumn and spring when grass growth is at its slowest.

**Curative:** Apply at first sign of disease and repeat as necessary at intervals of 1 month or later. Maximum number of treatments: 4 per year.

**Preventative:** Apply at monthly intervals.

If grass is being mown, **Mascot Rayzor** should be applied after cutting and further mowing should not take place until AT LEAST 24 hours after treatment.

Apply as a medium/coarse spray as recommended by the BCPC system. Always check manufacturer tables for current nozzle choices before applying the product.



Dew build-up is reduced after treatment